

# 2019 SMB IT SECURITY REPORT

# INTRODUCTION

Untangle provides network security solutions to small and midsize businesses (SMBs) all over the world. Untangle surveyed more than 300 SMBs globally to learn more about the state of IT security at these organizations. We've compiled data on IT trends that include budget and resource constraints, breaches, IT infrastructure, cloud adoption, and the general state of IT.



## KEY FINDINGS

**1**

Business footprints are increasing as offices include more remote employees and branch offices outside of a headquarter location.

**2**

Small and midsize businesses are deploying more cloud-based IT infrastructures, in comparison to standard on-premises architectures.

**3**

Businesses continue to identify budget constraints as the main barrier when it comes to IT security, closely followed by limited time to research solutions and train employees on cybersecurity.

**4**

The biggest incentive for SD-WAN implementation is secure connectivity for remote branches and ease of network management.



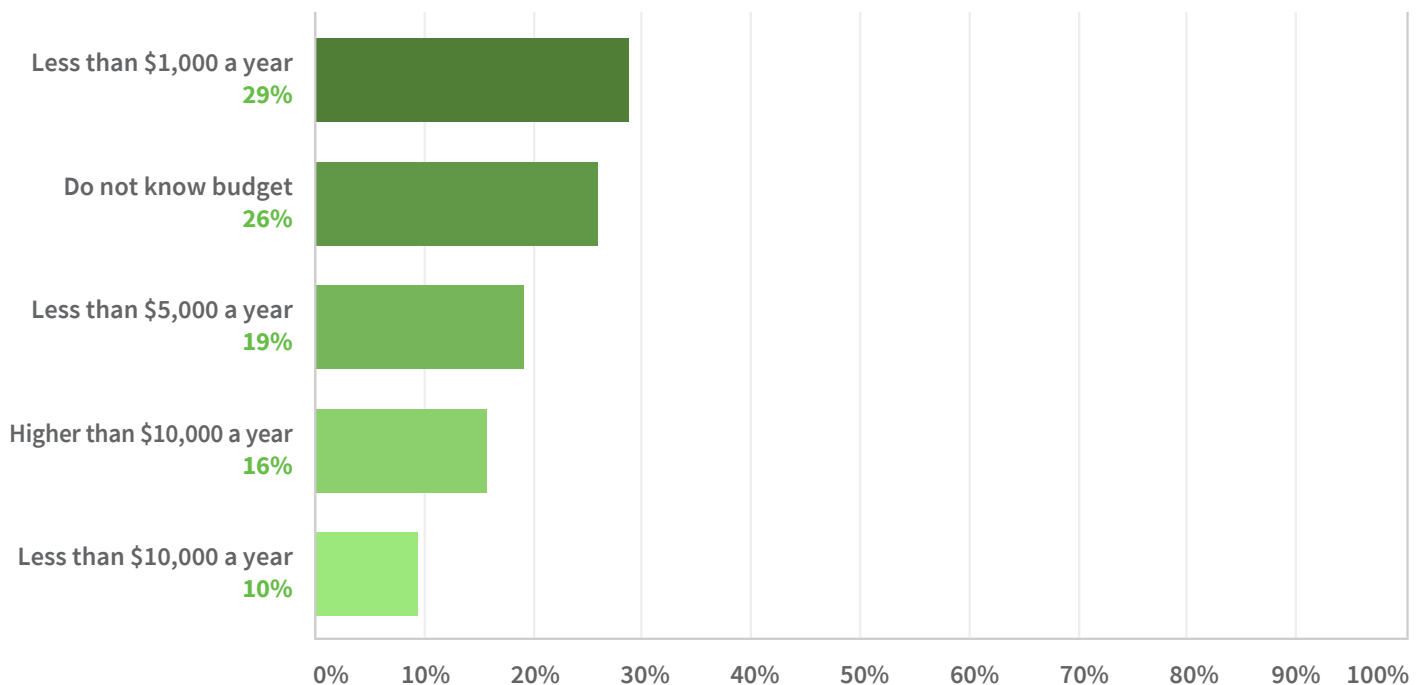
# STATE OF SMB IT SECURITY

According to the small to midsize businesses surveyed for this report, 80% note that IT security remains a top priority for their business. However, the implementation and investment in IT security solutions struggle to meet this strategic business objective, with almost 30% of SMBs investing less than \$1,000 a year on IT security and 52% noting that this responsibility is distributed across other roles within the company.

<h2>29%</h2> <p>of businesses invest less than \$1,000 a year on IT security</p>	<h2>52%</h2> <p>of SMBs distribute IT security responsibility across other roles</p>
--	--

As attacks on small and midsize businesses continue to increase, these companies need a cost-efficient, scalable unified threat management solution.

## WHAT IS YOUR BUDGET FOR IT SECURITY?



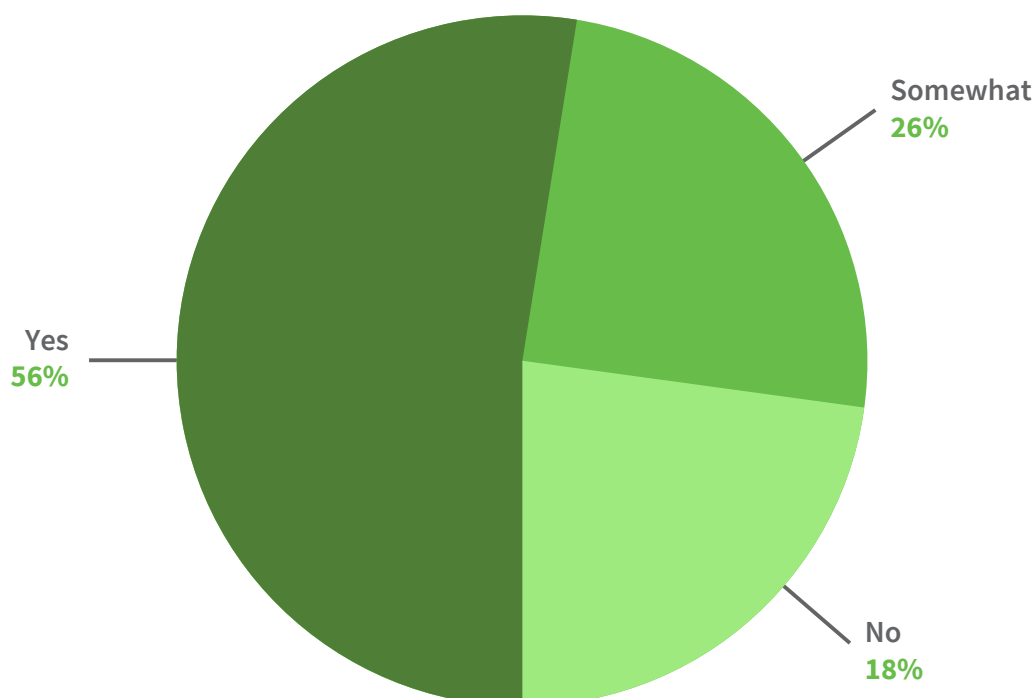


## CONCERNS REMAIN AT THE FOREFRONT

56% of respondents confirm that recent security breaches affect the way their business strategizes their security roadmap moving forward. Sadly, due to budget and personnel constraints, businesses have limited resources to research and understand new threats targeting their business. This is compounded by the fact that 32% identify employees who do not follow IT security guidelines or policies, as a significant impediment to IT security for those policies that are currently in place.

Despite these limitations, businesses understand the importance of firewall/network security, protection against viruses and malware, and identity access management and rank these as their top three features when considering an IT security solution.

### DO THE RECENT SECURITY BREACHES AFFECT THE WAY YOU THINK OF YOUR SECURITY ROADMAP MOVING FORWARD?



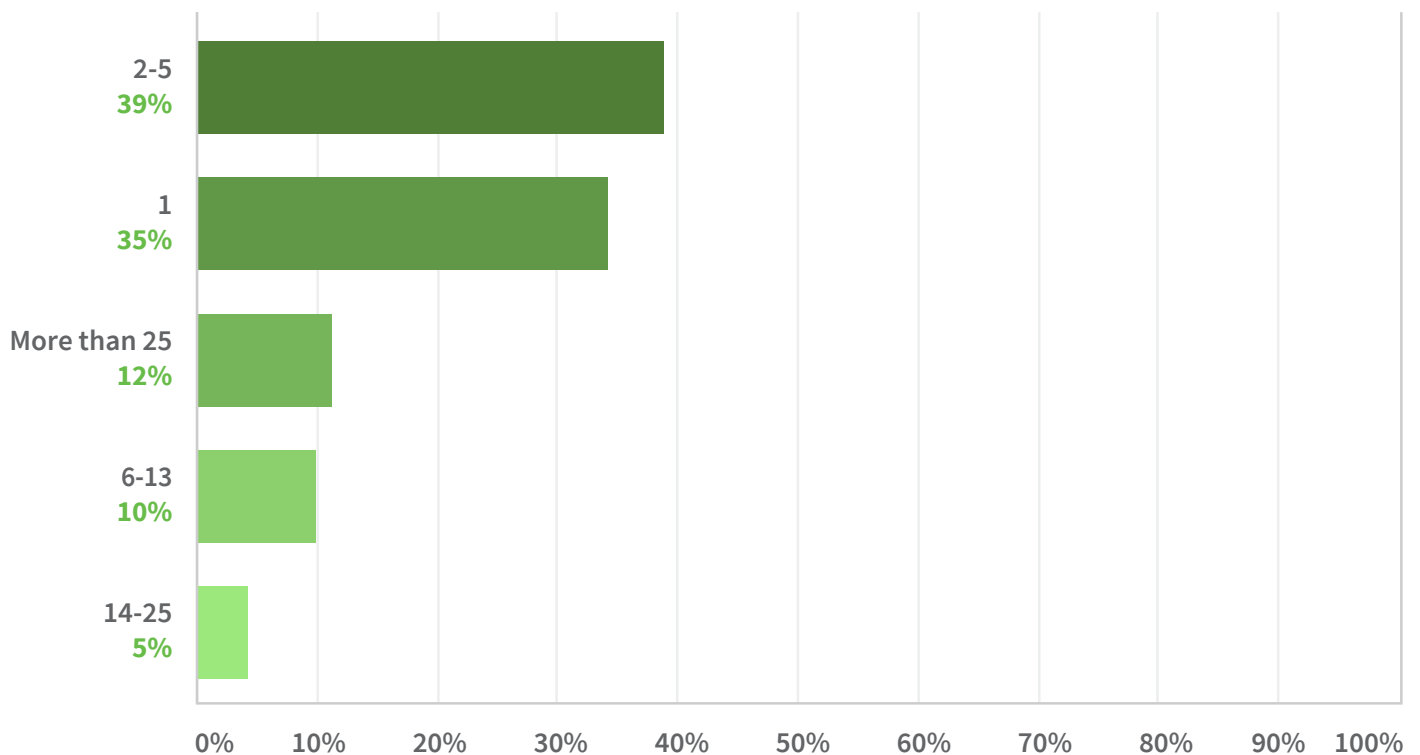


## EXPANDING WORKFORCE

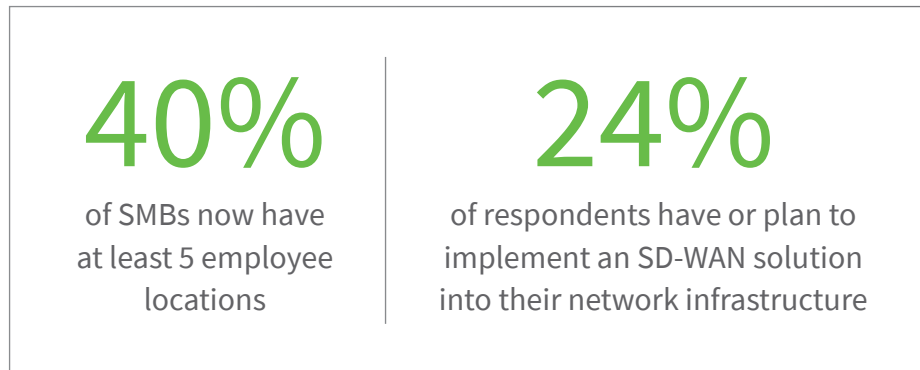
The business landscape is shifting. With an increase in connectivity and technology, businesses are hiring the best employees for their company, even if this means the employee is in a different city, state, or country. Of those surveyed, 40% of SMBs now have at least 5 employee locations, with 11% identifying more than 25 employee-based locations.



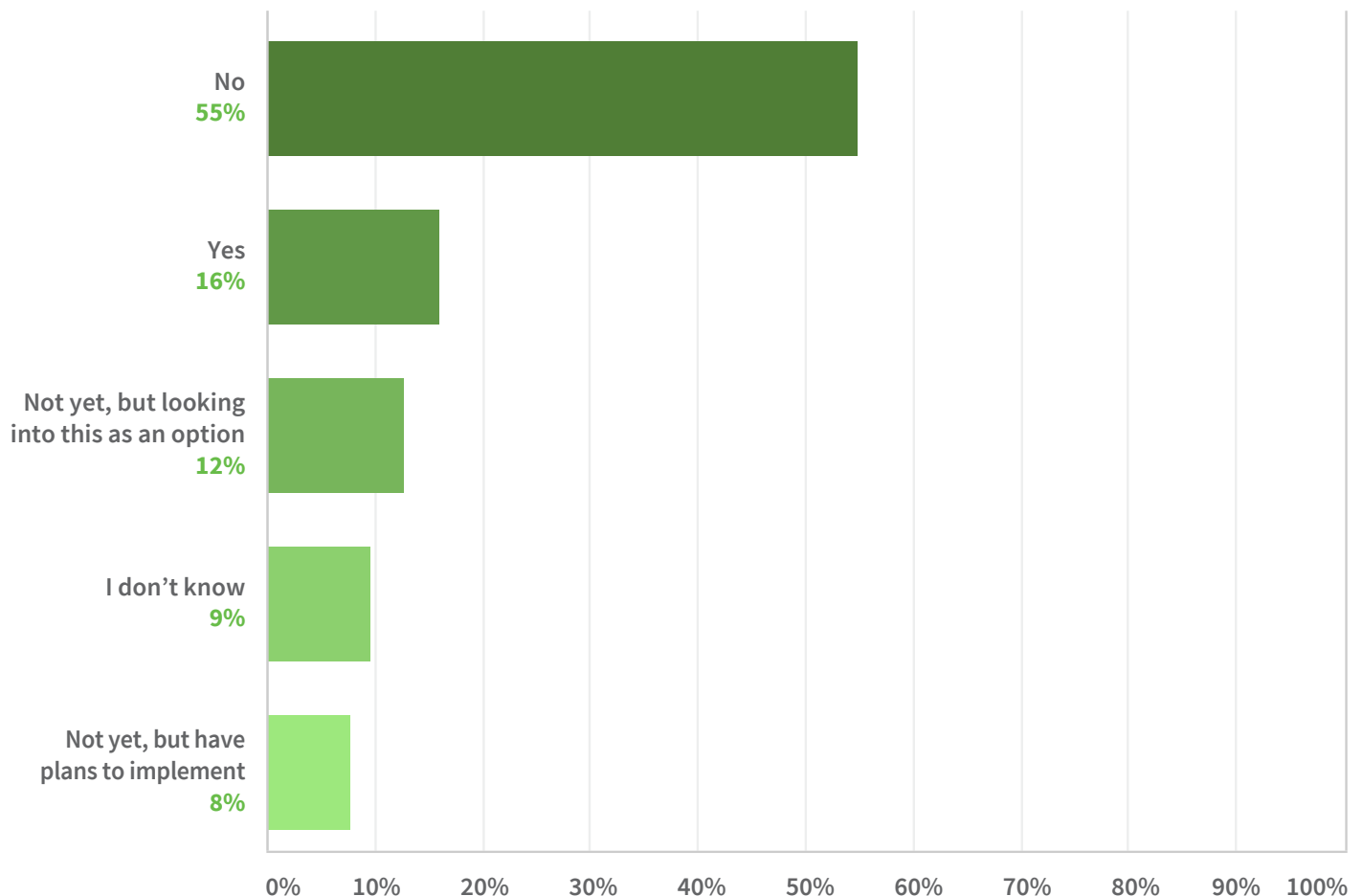
### HOW MANY PHYSICAL LOCATIONS DOES YOUR BUSINESS OPERATE ACROSS (INCLUDING REMOTE ACCESS WORKERS)?



Businesses with remote workers and branch offices need to consider IT security in a more complex capacity than a single-location infrastructure. Software-defined WAN solutions help organizations optimize their internet connections and easily create one global office network: across service providers, physical locations, and networks. At least 24% of those surveyed have or plan to implement an SD-WAN solution into their network infrastructure with the goal of reducing risks to the network and managing branch offices.



## HAVE YOU IMPLEMENTED SD-WAN SOLUTIONS IN YOUR ORGANIZATION?



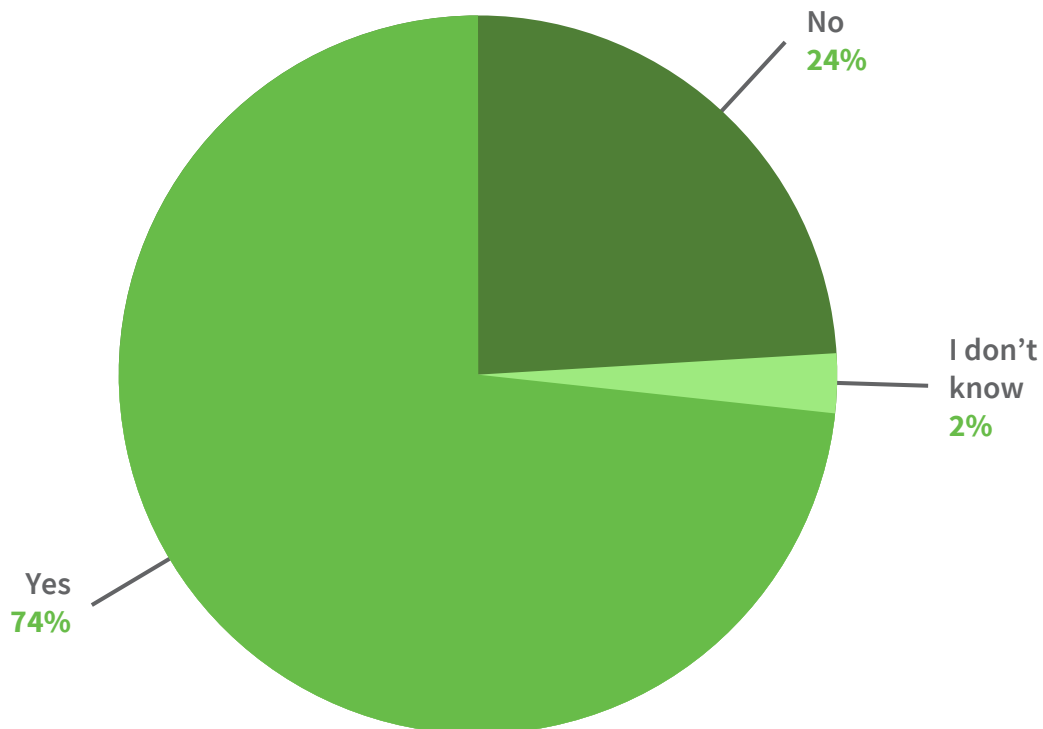


## CLOUD-BASED IT INFRASTRUCTURE

Most SMBs (74%) have at least part of their IT infrastructure deployed on the cloud. Transitioning to a cloud-based IT infrastructure allows SMBs to improve their processes, storage, and networking fabric resources. The scalability of the cloud allows SMBs with limited resources to pay-as-they-go and transform their infrastructure as their business needs change.

However, security on the public cloud remains a vulnerability for SMBs. 63% of survey respondents state their organization does not deploy a firewall on the public cloud, leaving these businesses open for cyber attack.

### DO YOU HAVE AT LEAST PART OF YOUR IT INFRASTRUCTURE DEPLOYED IN THE CLOUD? (PUBLIC OR PRIVATE)





## LOOKING AHEAD

As technologies change, SMBs must also change their dedication to network security and where it stands as a business priority. Small and midsize businesses will continue to be a target for hackers because of their limited resources.



As employee-based remote offices and branch offices continue to expand, SD-WAN deployment will be critical in establishing secure connections between employee locations separated by distance, offering network-wide control and visibility for incoming threats or attacks.

Firewall as a Service (FWaaS), similar to other cloud-based services being used today, will deliver firewall and other network security capabilities as a scalable unified threat management solution for cloud-based IT infrastructures. Building a security strategy within an SMBs roadmap to include cloud-based IT infrastructure implementation will be crucial as more companies transition away from traditional on-premises infrastructure.





# UNTANGLE NG FIREWALL FOR SMBs

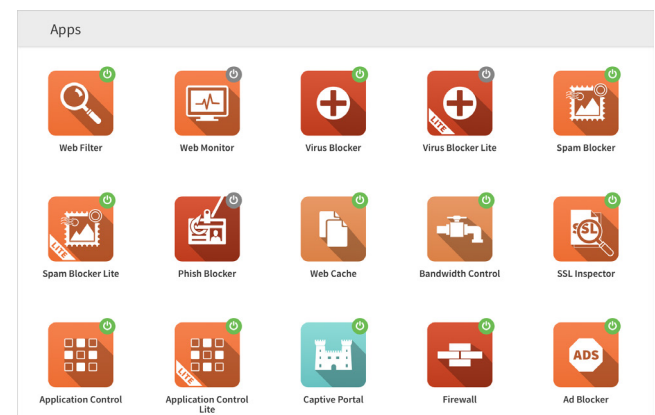


Untangle provides simple and affordable network security specifically for SMB. Our flagship product, NG Firewall, provides unified threat management capabilities integrated with robust policy management tools that enable IT administrators to monitor, manage and control their networks while also providing protection from evolving threats. Known for simplifying network security, NG Firewall delivers enterprise-grade cybersecurity features in a package that is easy to purchase, configure, deploy and maintain. Untangle NG Firewall helps SMBs by providing:

- **Protection at the gateway to block malware, spyware, phishing and hackers before they ever reach your network**
- **Visibility into everything happening on the network at Layer 7**

- **Establish policies and network configurations once and replicate across all offices**
- **VPN connectivity to tackle the challenges of a remote workforce, branch offices, and guest Wi-Fi**

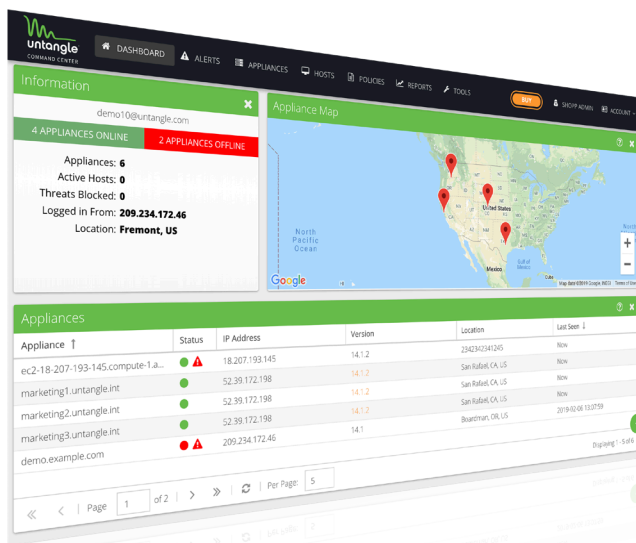
NG Firewall's industry-leading reporting and alerting capabilities provide business owners an unprecedented level of insight into what's happening with their network, giving them peace of mind whether in the office, at home or on the road.



Trusted by over 40,000 customers worldwide for its effectiveness and ease-of-use, NG Firewall is the solution of choice for organizations facing not only the challenges of network security, but also limited budgets, resources and in-house IT expertise.



# NETWORK SECURITY MANAGEMENT

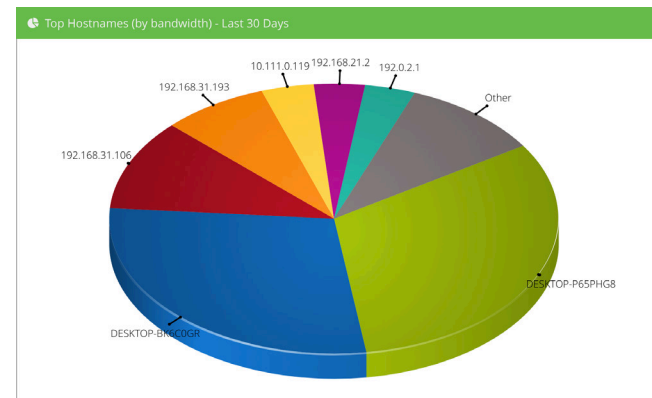


Untangle's Command Center provides network security management across locations from a cloud-based console. Command Center easily allows network administrators to manage NG Firewall deployments with zero-touch provisioning, and push any policy changes across the network in real-time. With Command Center, Untangle gives IT professionals unprecedented insight and visibility to all devices connected to the network, allowing for end-to-end control over what is happening.

- **Cloud-based centralized management of all your NG Firewall deployments.**
- **See the status of your sites at a glance—all in one place.**
- **Get valuable auditing logs—key to regulatory compliance.**
- **Quickly and easily manage policies across deployments.**

- **Access to new management features as they become available.**

As a cloud service, Command Center updates are seamless and automatic, providing immediate access to the latest improvements. By simplifying provisioning and licensing, organizations can realize immediate cost-savings from reduced management overhead. Real-time firewall and endpoint status alerts help in site management and maintaining regulatory compliance.



Managing the security of distributed networks and connected devices can be a daunting task for IT administrators and MSPs. Untangle's Command Center gives admins the ability to manage network traffic across locations simply and easily from a cloud-based console, accessible from any browser.



## ABOUT UNTANGLE

Untangle is an innovator in cybersecurity for the below-enterprise market, safeguarding people's digital lives at home, work and on-the-go. Untangle's integrated suite of software and appliances provides enterprise-grade capabilities and consumer-oriented simplicity, bringing a new generation of smart security to homes and small-to-mid-sized businesses. Untangle's award-winning network security solutions are trusted by over 400,000 customers, protecting nearly 5 million people, their computers and networks around the world.

## RECENT AWARDS



**Untangle, Inc.**  
25 Metro Drive, Ste. 210  
San Jose, CA 95110  
[www.untangle.com](http://www.untangle.com)

**For sales information, please contact us by phone in the US at +1 (866) 233-2296 or via e-mail at [sales@untangle.com](mailto:sales@untangle.com).**

©2019 Untangle, Inc. All rights reserved. Untangle and the Untangle logo are registered marks or trademarks of Untangle, Inc. All other company or product names are the property of their respective owners.