

# Micro Edge

A lightweight network-edge device for branch office connectivity

Micro Edge is a lightweight network edge device providing branch office connectivity, business continuity, application performance and network optimization. It provides the ability to route traffic over a network with key advanced traffic management features such as multiple VPN links between sites, policy-based routing, and dynamic path selection based on network conditions.

## Why Micro Edge?

### Seamless Scalability

- Secure, network connectivity for every location.

### Edge Optimization

- Our optimal predictive routing technology for first packet, dynamic path selection.

### Secure Internet Access

- Micro Edge contains multiple layers of security including a stateful firewall, Threat Prevention, Geo-IP Filter and Web Filter which blocks traffic that can cause harm to your network.

## Branch Office Connectivity

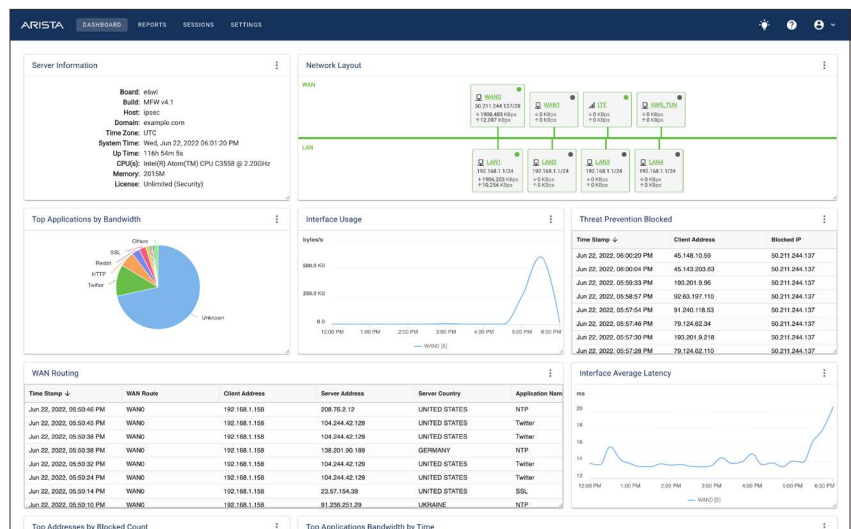
Micro Edge simplifies and reduces the costs of branch office networking. Micro Edge, as a lightweight edge device, is designed for the needs and budgets of small to mid-size offices.

## Business Continuity

Micro Edge ensures that the most important business critical applications are prioritized, and includes flexible and powerful WAN balancing and WAN failover. With multiple WAN ports and optional LTE connectivity (AT&T, T-Mobile, or Verizon), Micro Edge balances network traffic in real-time over multiple Internet paths. Link monitoring and automatic failover eliminate network downtime.

## Application Performance & WAN Optimization

Deploying Micro Edge at a branch office boosts Internet connectivity with traffic shaping and QoS to prioritize business critical traffic. Real-time performance monitoring with WAN balancing improves the performance of existing inexpensive Internet connections to eliminate the need for costly dedicated links such as MPLS.



**Advanced Security**

- Protection, encryption, control & visibility anywhere
- NG Firewall, IPS, VPN & more
- Onboard security for small network appliances & IoT devices
- Full security processing on-premises or in the cloud

**Intelligent Edge Optimization**

- Secure, WAN-optimized connectivity for every location
- Seamless scalability
- Optimal predictive routing technology
- Manage one or many appliances from ETM Dashboard

**Cloud Management at Scale**

- Zero touch deployment
- Configure & push policies
- Advanced alerting & reporting
- Visibility across globally dispersed networks & endpoints

# Edge Threat Management

## Bring Cloud-managed Security & Connectivity to the Network Edge

The way we work is evolving. Businesses have adapted to new cloud-based technologies and applications that have increased employee efficiency and provided a scalable pathway to continued business growth. Work teams, now comprised of employees working in headquarter offices, remotely, or branch offices, have become spread across increasingly large distances. While businesses realize a range of important benefits in this transformative era, managing these dispersed networks and their connected devices can bring new challenges of cost, complexity, and control.



**ETM Dashboard**

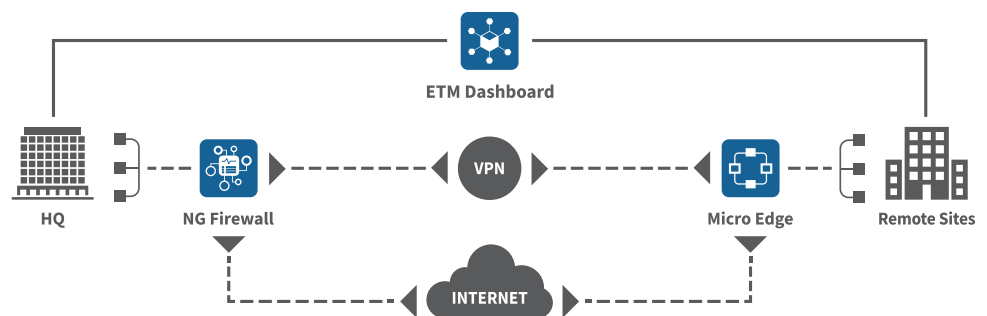


**NG Firewall**



**Micro Edge**

Edge Threat Management, consisting of our award-winning NG Firewall, Micro Edge, and centralized management platform, ETM Dashboard, is a comprehensive approach to network security orchestration. This framework offers a suite of cloud-managed security and connectivity options that work together to fit the needs of small-to-medium businesses and distributed enterprises. This integrated approach provides IT teams with the ability to ensure protection, monitoring and control across devices, applications, and events, enforcing a consistent security posture over the entire digital attack surface. Edge Threat Management puts IT back in control of dispersed networks, hybrid cloud environments, and IoT and mobile devices.



**Managed Service Providers**

Use ETM Dashboard to seamlessly manage multiple NG Firewall and Micro Edge deployments remotely through a single pane of glass for simplified security orchestration.

**Contact our sales team to learn more about how Arista Edge Threat Management can benefit your organization.**

# Micro Edge Features

| Feature  | Summary  |
|--|--|
| <b>Traffic Optimization</b>                      | Traffic shaping and Quality of Service prioritizes business critical traffic across WAN links. Traffic steering uses optimal predictive path selection that incorporates a sophisticated cloud component to identify applications at the first packet. This advanced technology enables Micro Edge to choose the best path for specific applications or categories of network traffic. |
| <b>Dynamic Path Selection</b>                    | Jitter, packet loss, latency and throughput of each link are continually measured to ensure applications can be sent over the best performing links for their needs. Decisions on which links to use are made in real-time based on actual current link performance of packet loss, latency and jitter conditions, as well as available bandwidth.                                     |
| <b>Internet Link Load Balancing and Failover</b> | Balance internet traffic to best utilize the available bandwidth across all WAN links. Network traffic will be sent over the next best performing link when a link fails, or fails to meet performance requirements. Multiple WANs as well as LTE connectivity can be used as primary or failover links.   |
| <b>VPN Connectivity</b>                          | Securely connect distributed enterprises and remote workers using VPN. VPN connectivity options include IPsec VPN, OpenVPN and WireGuard VPN. Simplify deployment of multiple appliances by connecting appliances with auto-provisioning VPN in ETM Dashboard.   |
| <b>Threat Prevention</b>                         | Advanced security capability that blocks high risk Internet traffic using the Webroot BrightCloud® reputation score associated with the remote host.   |
| <b>Geo-IP Filter</b>                             | Incoming and outgoing traffic can be blocked based on country and provide an additional layer of security and control for network administrators.  |
| <b>Web Filter</b>                                | Advanced security feature, powered by Webroot Brightcloud®, that performs a real-time assessment of the URL category and risk posed when opening a URL. Network activity is logged or and blocked for high risk, inappropriate, or distracting websites.   |
| <b>Zero-Touch Provisioning</b>                   | Network administrators can remotely set up and configure Micro Edge appliances. Automatic upgrades ensure all appliances are kept up to date with the latest updates.  |
| <b>Centralized Management</b>                    | One or many Micro Edge appliances can be managed from ETM Dashboard, accessible from any browser. Full visibility of all deployments enables administrators to view appliance network status, important events, and reporting data. Configure and push policy templates, WAN rules, and global configuration.  |

## Secure Internet Access

Micro Edge includes a stateful firewall, Threat Prevention, Geo-IP Filter and Web Filter that filter out high risk applications, hosts or URL's, and drops traffic that can cause harm to the network.

## Deployment Options

Micro Edge hardware appliances have options for multiple types of WAN interfaces, 802.11 ac WiFi and LTE connectivity (AT&T, T-Mobile, or Verizon). Micro Edge is also available as a virtual appliance on VMware ESXi.

## Licensing

Micro Edge is available in two software packages (Security and Basic) for an unlimited number of devices or users. Licensing is also based on throughput: Up to 100 Mbps and Unlimited.

# Appliances for Micro Edge

Micro Edge appliances are lightweight, edge devices designed for branch office connectivity, business continuity, application performance and network optimization. Featuring multiple WAN interfaces, 802.11ac Wi-Fi and LTE Cellular connectivity, Micro Edge appliances support zero-touch provisioning and remote management via ETM Dashboard for seamless network integration into your branch office.



|                        | Q6E                                      | Q6EWL                                    |
|------------------------|--|--|
| Processor              | Quad Core Intel Atom C3558               | Quad Core Intel Atom C3558               |
| RAM                    | 2 GB DDR4                                | 2 GB DDR4                                |
| Storage                | 8 GB mSATA SSD                           | 8 GB mSATA SSD                           |
| WAN Interfaces         | 2x GbE / SFP Combo                       | 2x GbE / SFP Combo                       |
| LAN Interfaces         | 4x GbE                                   | 4x GbE                                   |
| Wireless               | –  | 802.11 2X2 MU-MIMO ac/a/b/g/n            |
| LTE                    | –  | 4G LTE Cat-6, AT&T, T-Mobile, or Verizon |
| USB Ports              | 2  | 2  |
| Console                | RJ45 (Serial)                            | RJ45 (Serial)                            |
| Dimensions (w x d x h) | 9.1" x 6.9" x 1.7"<br>(231 x 175 x 43mm) | 9.1" x 6.9" x 1.7"<br>(231 x 175 x 43mm) |
| Unit Weight (lbs)      | 3.1                                      | 3.3                                      |
| Shipping Weight (lbs)  | 5.5                                      | 5.7                                      |
| Form Factor            | Fanless Desktop, Rack Mount Option       | Fanless Desktop, Rack Mount Option       |
| Operating Temperature  | 32° - 104°F<br>(0° - 40°C)               | 32° - 104°F<br>(0° - 40°C)               |
| Relative Humidity      | 10% - 90%                                | 10% - 90%                                |
| Power Supply           | 40W Power Adapter                        | 40W Power Adapter                        |

For shipping destinations outside of the United States, please visit [edge.arista.com](https://edge.arista.com) or contact sales.

**Santa Clara—Corporate Headquarters**  
5453 Great America Parkway,  
Santa Clara, CA 95054

**Phone:** +1-866-233-2296  
**Email:** [edge.sales@arista.com](mailto:edge.sales@arista.com)



Copyright © 2023 Arista Networks, Inc. All rights reserved. CloudVision, and EOS are registered trademarks and Arista Networks is a trademark of Arista Networks, Inc. All other company names are trademarks of their respective holders. Information in this document is subject to change without notice. Certain features may not yet be available. Arista Networks, Inc. assumes no responsibility for any errors that may appear in this document. February 7, 2023